

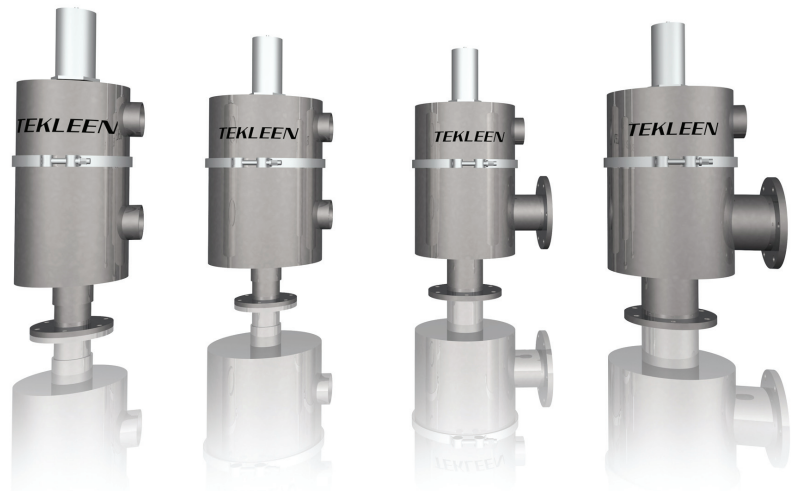
The best engineered water filtering solution always cost less.

The MTF Series

Minitwist Filters

Standard Features

- Line Sizes: 1 – 6"
- Flow Rate: 1 - 500 gpm
- Screen Opening: 10 μ - 2,000 μ
- Material: SST 316L
- Pressure: 40 - 150 psi
- Temperature to: 210°F
- Flush Valve Size: 1"-2"
- Flush Flow Rate: 40-160 gpm
- Flush Duration: 5 seconds
- Flushing Volume: 2-15 gallons



Tekleen[®] features a high quality low cost line of Mini Twist Filters (MTF) in SST 316L. The MTF line offers compact self-cleaning water filters with high flow capacity. They are specially designed for industrial applications and irrigation. Our new screen cleaning technology, *Tekrinse* uses 90% less rinse water than other filters in the market today.

The best engineered water filtering solution always costs less.

MTF Series Filter Specifications

Model #	Flange Size inches	Screen Area sq. ft.	Max Flow gpm
MTF1	1	0.6	100
MTF1.5	1.5	0.6	100
MTF2	2	0.6	100
MTF2-L	2	1.5	200
MTF3	3	1.5	300
MTF3-L	3	3	300
MTF4	4	1.5	300
MTF4-L	4	3	400
MTF6	6	3	500

Specifications: SST, 316L. Maximum 150 psi, 210°F, 3 layers sintered stainless steel screen. Mesh sizes from 10 μ to 2,000 μ . 5 second rinse duration, using 2 gallons per rinse without interrupting main flow. 1"-2" flushing valve.

